



NEWS RELEASE

Contact: Tom O'Grady
Suffolk Economic Development
(757) 514-4040
togrady@city.suffolk.va.us
www.YesSuffolk.com

Contact: Bill Blount
DLBA Robotics, Ltd.
(757) 543-1300
bblount@dlbarobotics.com
www.dlbarobotics.com

Suffolk welcomes DLBA Robotics, Ltd.

SUFFOLK, Va. January 9, 2008 – The Suffolk Economic Development Authority announced today a 6.65-acre site at Suffolk Industrial Park is under contract for sale to DLBA Robotics, Ltd. for the development of a 30,000-square-foot office, manufacturing, and warehouse building. Estimated new capital investment in Suffolk will be approximately \$3 million. The company will bring 50 new jobs to the City of Suffolk. Construction is expected to begin in late spring of 2008.

DLBA Robotics, Ltd. is a manufacturer of large molding patterns for the marine, rail, aerospace, and wind generation industries. The company uses a 7-axis machining system with two robots controlled by a computer to mill very large patterns and molds. The technology employed by DLBA Robotics is not new, but it is unique to the production tooling industry.

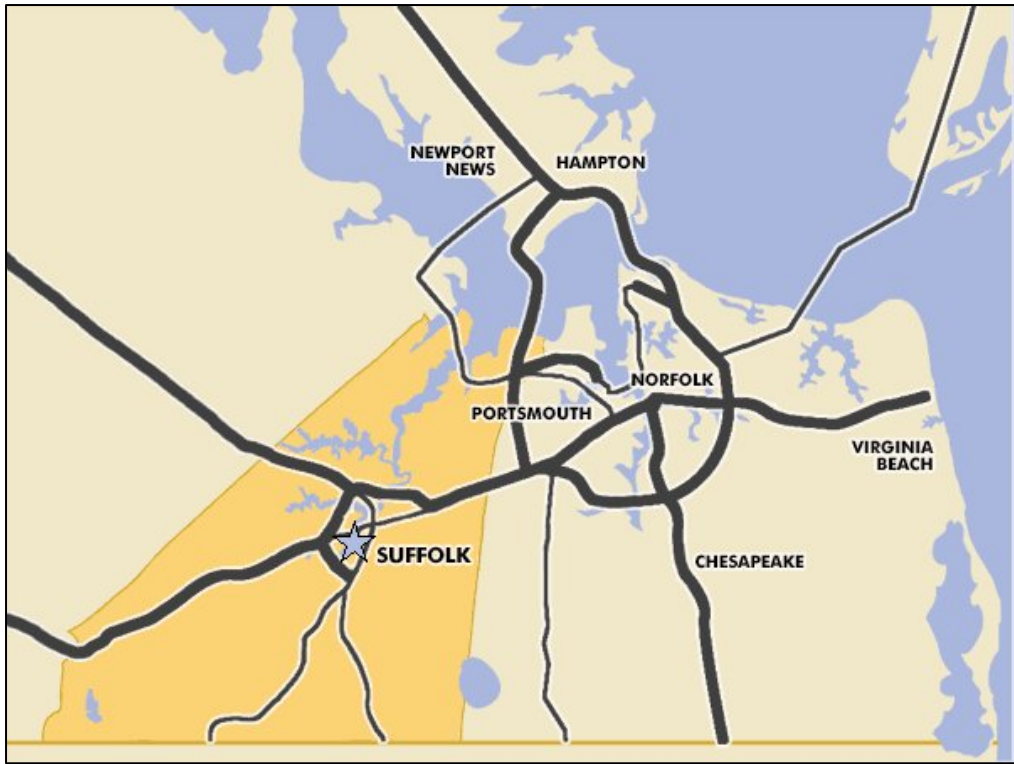
It's a good time to be in Suffolk

“DLBA Robotics appreciates the attention that Suffolk Economic Development provided to our company,” stated Bill Blount, Commercial Manager and Owner. “This site provides opportunities for our current and future expansions plans. We look forward to the start of operations in Suffolk in early 2009.”

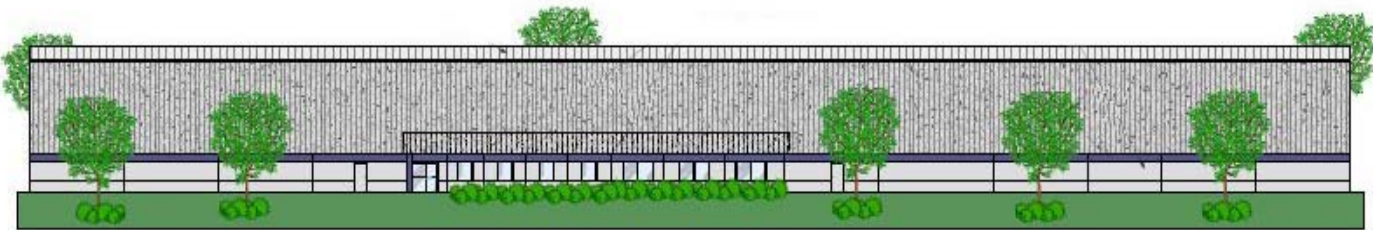
“We are extremely pleased that DLBA Robotics, Ltd. has decided to locate their new operations in Suffolk,” said Suffolk Mayor Linda T. Johnson. “They will be a great addition to the growing number of manufacturing companies located in Suffolk Industrial Park.”

Suffolk Industrial Park is a regional commerce park conveniently located on Carolina Road, near the Route 58 Southwest Bypass, with Virginia Enterprise Zone designation for new and expanding businesses. Under the park master-plan design criteria provide a professional and attractive setting for office as well as light industrial uses. Existing tenants within Suffolk Industrial Park include: Amadas Coach, FLEXA Furniture, Heritage Woodworks, Pugh Lubricants, Tile and Terrazzo, Trans Ocean Imports, Trindco, and Western Branch Metals.

It's a good time to be in Suffolk



★ Suffolk Industrial Park



Building Elevation of DLBA Robotics, Ltd.

#####

It's a good time to be in Suffolk