

# Suffolk Community Profile

Community Profile for the City of Suffolk, Virginia, Department of Economic Development, [www.Suffolk.va.us](http://www.Suffolk.va.us)



Left to right, Kings Fork High School, Sara Lee Coffee and Tea Co., Towne Bank Member Service Center.

Suffolk is a dynamic fusion of urban, suburban, village and waterfront lifestyles, preserving nearly four centuries of history, a quaint downtown, prospering industries, and unparalleled southern hospitality. Suffolk has evolved into a diverse city boasting world-class employers, stylish and affordable housing, quality healthcare, excellent schools and an endless choice of recreational opportunities.

## Location

The City of Suffolk is part of the Norfolk/Virginia Beach/Newport News Metropolitan Statistical Area (MSA). There are 1.6 million people, ranking this area the 40<sup>th</sup> largest in the country. Suffolk is 20 miles west of Norfolk, 90 miles southeast of Richmond, and 200 miles southeast of Washington, D.C.

## History

Thanks to a very ambitious settler named John Constant, Suffolk was officially recognized with the establishment of a permanent township in 1742. Burned by the British in 1779, occupied by Union troops during the Civil War, and damaged by fires throughout the next century, Suffolk survived and was incorporated as a city in 1910. In 1974, a merger created the present boundaries of Suffolk, consolidating the towns of Holland and Whaleyville, and the county of Nansemond, creating the largest land-area city in Virginia with 430 square miles.

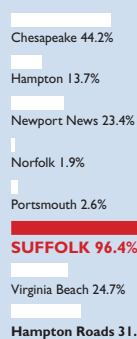
## Government

Suffolk is organized under a Council/Manager form of government. The city is divided into seven voting boroughs and each one elects a member to the City Council, which in turn elects the Mayor and Vice Mayor and appoints a City Manager. The City Manager

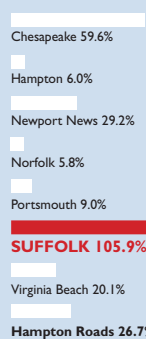
## Population and Employment Projections

	2000 Census	2030 Population Revised	2000 Census	2030 Employment Revised
Chesapeake	199,184	287,200	102,765	164,000
Hampton	146,437	166,500	83,361	88,400
Newport News	180,150	223,000	115,678	149,500
Norfolk	234,403	238,900	225,319	238,500
Portsmouth	100,565	103,200	52,831	57,600
<b>SUFFOLK</b>	<b>63,677</b>	<b>125,100</b>	<b>26,273</b>	<b>54,100</b>
Virginia Beach	425,257	530,500	236,446	284,000
Hampton Roads	1,551,351	2,038,900	963,231	1,220,000

## 2000-2030 % Increase Population



## 2000-2030 % Increase Employment



\* Source: Hampton Roads Planning District Commission.

oversees the daily operation of the city while the City Council provides strategic direction, sets the budget, and votes on rezonings and special use items.

## Local Economy

Suffolk is a land of many opportunities. Easy access to interstate highways, airports, railways and the Port of Virginia have all made Suffolk the region's prime location for business development. Suffolk has more than 17 commercial and industrial sites available for immediate occupancy and development. From high-tech corridors to mixed use sites and industrial environments, companies are offered a wealth of opportunities to relocate and expand their business.

In 2003, there was over \$120 million in investments by new and expanding business creating almost 1,000 new jobs. Lockheed Martin announced plans for a new 50,000-square-foot, hexagon-shaped office and research and development center, investing more than \$35 million into the project. Another major event was the groundbreaking for the new Hilton Garden Inn and Suffolk Conference Center. The 150-room hotel and 14,000-square-foot conference facility is expected to open in Spring 2005 and includes a 6-acre public park, boardwalk and 30-slip marina.

It was also a good year for historic downtown revitalization. Restoration was completed on the Suffolk Professional Building, a seven-story 27,000-square-foot landmark office building constructed in the early 1900s. Its upper floors are now occupied by the Suffolk Public Schools Administration, and a 100-seat restaurant is planned for the two-story vaulted lobby. This \$4 million project is one of the anchors of our ongoing downtown revitalization efforts.

## Taxes

### State

Corporate Income	.... 6%
Personal Income	.... 5.75%
Retail Sales	..... 5%
Meals	..... 5.5%

### Local

#### Real Estate Tax

per \$100 of assessed value	
City Wide	..... \$1.08
Suffolk District	..... \$1.24
Route 17 District	.... \$1.34
Mosquito District	... \$1.115

#### Business Property Tax

\$4.25 per \$100 original cost @ 20%  
(Effective rate of \$0.85/\$100)

#### Business License Tax

If gross receipts are greater than \$100,000:

Retail	..... \$20/\$100
Wholesale	..... \$.09/\$100

(Manufacturers exempt)

#### Machinery and

#### Tools Tax

\$3.15 per \$100 original cost:  
1-5 years old @ 20%  
(Effective rate of \$0.63/\$100)  
6+ years old @ 10%  
(Effective rate of \$0.315/\$100)

#### Utilities Tax

first \$10,000:

Phone	..... 13%
Gas	..... 13%
Electric	..... 13%
Water	..... none



Suffolk offers diverse recreational opportunities from hiking, biking and boating to five championship golf courses.

# High tech, low stress, world-class accessibility, historic charm and wide-open spaces.

## Modeling and Simulation

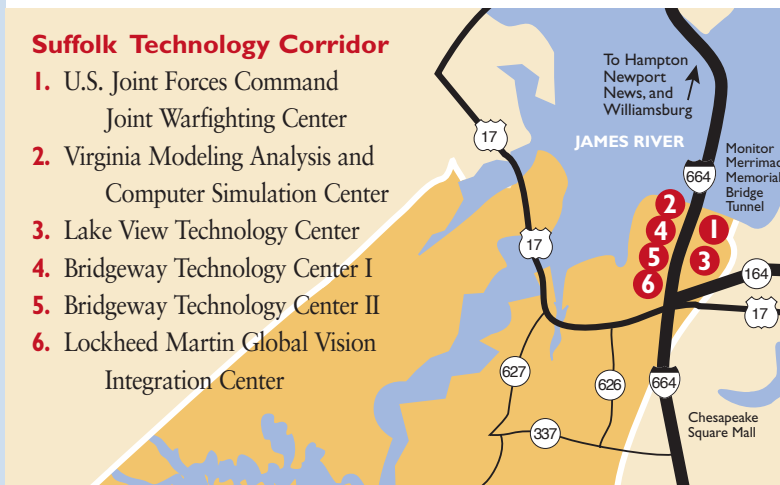
Hampton Roads, with its strategic location and skilled workforce, has become the nation's leading center for the military application of modeling and simulation. Suffolk is privileged to host a network of military and civilian research and development centers such as the U.S. Joint Forces Command, the Virginia Modeling Analysis and Simulation Center (VMASC), Lake View Technology Center and Bridgeway Technology Centers. Suffolk will soon be home to the new Lockheed Martin Global Vision Integration Center, which will provide modeling and simulation analysis for the development of Lockheed Martin products and services of the future.



The new Lockheed Martin Global Vision Integration Center under construction.

## Suffolk Technology Corridor

1. U.S. Joint Forces Command  
Joint Warfighting Center
2. Virginia Modeling Analysis and  
Computer Simulation Center
3. Lake View Technology Center
4. Bridgeway Technology Center I
5. Bridgeway Technology Center II
6. Lockheed Martin Global Vision  
Integration Center



## Banking

Downtown Norfolk is the financial hub of the region and home of the regional headquarters of Wachovia, Bank of America, SunTrust Bank, BB&T and the Bank of Hampton Roads, which all have branches in Suffolk.

Situated in northern Suffolk is the new \$10 million, 60,000-square-foot Member Service Center for Towne Bank. The facility was built to operate at a capacity of \$1.5 billion in assets, and houses the bank's central operations.

Dedicating themselves to the community and committed to providing quality service to their customers are two local community banks, SuffolkFirst Bank and Farmers Bank.

## Transportation

**ROADS:** I-664, part of the Hampton Roads Beltway, provides easy access to both South Hampton Roads and the Virginia Peninsula cities.

U.S. 58 and U.S. 460 connect Suffolk to I-95 and I-85 to the west. I-264 serves the metro area in the east. U.S. 17 and U.S. 13 run north-to-south. The

Southwest Bypass, an interstate-quality link, extends the existing U.S. 58 Bypass from Holland Road to Carolina Road.

**RAIL:** Norfolk Southern CSX and Commonwealth Railway provide commercial rail service. Amtrak offers passenger rail service out of Newport News.

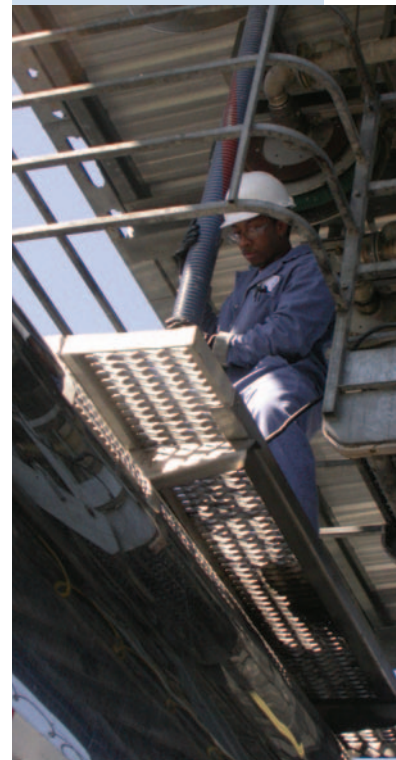
**AIR:** Norfolk International Airport has over 200 arrivals and departures

daily. Newport News/Williamsburg International Airport has approximately 50 arrivals and departures daily. Suffolk Executive Airport, located south of downtown, has a 5,000-foot runway and facilities to accommodate corporate jets. Nearby, Hampton Roads Executive Airport offers a 4,000-foot runway. Both airports are paved and lighted with fuel available and an NDB instrument rating. **BUS:** Greyhound/Trailways provides intercity bus service. Intracity bus service is provided by HRT. **PORTS:** The international Port of Virginia, located at the largest natural deepwater harbor in the world, is nearby in Norfolk, Portsmouth and Newport News. Over 75 million tons of cargo are handled annually. Suffolk's Nansemond River is also navigable to a depth of 12 feet.

**MOTOR FREIGHT CARRIERS:** More than 135 trucking firms serve the Hampton Roads area with numerous terminal facilities.

## Employment and Labor

Suffolk has a growing civilian labor force of 34,406, with an unemployment rate of 4.4% as of January 2004. The City retains over half of its workforce, and draws workers in large numbers from the surrounding cities of Hampton Roads and northeastern North Carolina.



CIBA Specialty Chemicals.

Wages in Suffolk are competitive with the rest of the Hampton Roads region.

Less than 6% of Suffolk's industries have union membership. A majority of those companies with unions have less than 50% union participation. Virginia is a right-to-work state.

## Communications

**TELEPHONE:** Service is provided by Verizon.  
**NEWSPAPER:** Published daily are *The Virginian-Pilot*, *The Daily Press* and *The Suffolk News-Herald*.

**RADIO:** 19 AM and 34 FM stations broadcast locally throughout the region.

**TELEVISION:** CBS, ABC, NBC, PBS, WB, UPN, and FOX have area affiliates. Major cable networks are provided through Charter Communications.

## Utilities

**ELECTRICITY:** Supplied and distributed by Dominion Virginia Power and Community Electric Cooperative.

**NATURAL GAS:** Supplied by Columbia Natural Gas Transmission Corp., and distributed by Columbia Gas of Virginia and Virginia Natural Gas Co.

**WATER:** The City of Suffolk supplies water from its water treatment plants. Water resources consist of surface water and groundwater with a total combined capacity of approximately 10 million gallons per day (mgd). Current average daily use is 4.4 mgd, with a system storage capacity of 6 million gallons.

**SEWERAGE:** The City of Suffolk collects and transmits sewage to the Hampton Roads Sanitation District for treatment. Current average daily use is 10 million gallons per day; maximum daily treatment

capacity is 30 million gallons.

**SOLID WASTE DISPOSAL:** Southeastern Virginia Public Service Authority accepts disposal of non-hazardous industrial waste with prior approval.

## Police and Fire

The Suffolk Police Department protects and serves the city with 151 sworn officers and 47 civilians. The department also maintains the city's emergency communication system, which supports the police and emergency rescue services. The Suffolk Department of Fire and Rescue combines 174 career and 100 volunteer personnel. The department provides fire suppression protection, advanced life support emergency response, and fire and life safety education. The Emergency Management Division is responsible for coordinating local, state and federal responses during disasters.

## Healthcare

In 2001 the new \$100 million Obici Hospital complex was completed at Godwin Commerce Park. The hospital offers state-of-the-art medical treatment facilities and high-quality patient care. Lakeview Medical Center has served the Suffolk community since 1906 and offers a range of healthcare services, including family medicine and urgent care. Bon Secours Health Center serves northern Suffolk with an outpatient surgery and their regional corporate offices.

## Suffolk's Major Employers

Firm	Product/Service	Employees	Year Established
Suffolk Public Schools	Education	1780	1975
Obici Memorial Hospital	Medical services	1200	1951
QVC Inc.	Merchandise distribution	1100	1998
Wal-Mart Stores, Inc.	General merchandise	1100	1988
City of Suffolk	City service and programs	900	1974
USJFCOM Joint Warfighting Center	Computer simulation	800	1994
Sysco Food Services of Hampton Roads	Wholesale groceries	500	2001
Ciba Specialty Chemicals, USA	Chemical processing	415	1983
USJFCOM Joint Experimentation	Computer simulation	410	1999
Kraft/Planters Peanuts Co.	Nut processing	340	1912
Sentry Services	Gas distribution	330	
Unilever/Lipton Inc.	Tea processing	320	1955
Target Corporation	Merchandise distribution	300	2003
Lakeview Medical Center	Healthcare facility	270	1906
Sara Lee Coffee and Tea Co.	Coffee processing	210	1987
Amadas Industries	Heavy equipment manufacturing	200	1963
Nansemond Pointe Rehabilitation and Healthcare Center	Healthcare facility	190	
Nansemond Suffolk Academy	Education	185	1966
Birdsong Peanuts Corp.	Food processing	150	1940
New Dominion Pictures	TV and film production	150	1999
Reliance Staffing Services	Human resources	130	1981
Supreme Foods, Inc.	Frozen food distribution	130	1990
Lake Prince Center	Retirement community	130	2002
Wanchese Fish Co./Suffolk Cold Storage	Seafood processing	130	2000
National Roofing Co.	Roofing contractor	115	1974
Pak-Al of Virginia	Packaging and supplies	115	1998
Dominion Virginia Power	Utilities	105	
Lancaster Farms, Inc.	Wholesale nursery	100	
Vitex Packaging, Inc.	Packaging materials	100	1959

## Tourism

Welcome to Suffolk, a thriving city with a diverse complement of people, culture, history, and community that offers many opportunities to celebrate, explore, reminisce, or simply relax. Visit the Great Dismal Swamp National Wildlife Refuge nature preserve that encompasses 111,000 acres. Enjoy a picnic, bicycling, hiking or birdwatching from the safety of marked trails and boardwalks. Fishing and boating is permitted year round in Lake Drummond, a 3,100-acre lake in the heart of the refuge.

Swim, scuba dive, canoe or fish in 8,000 acres of lakes and rivers. Play a round of golf at one of our five championship 18-hole courses. Or for an extreme good time, experience freefall skydiving with USPA certified instructors.

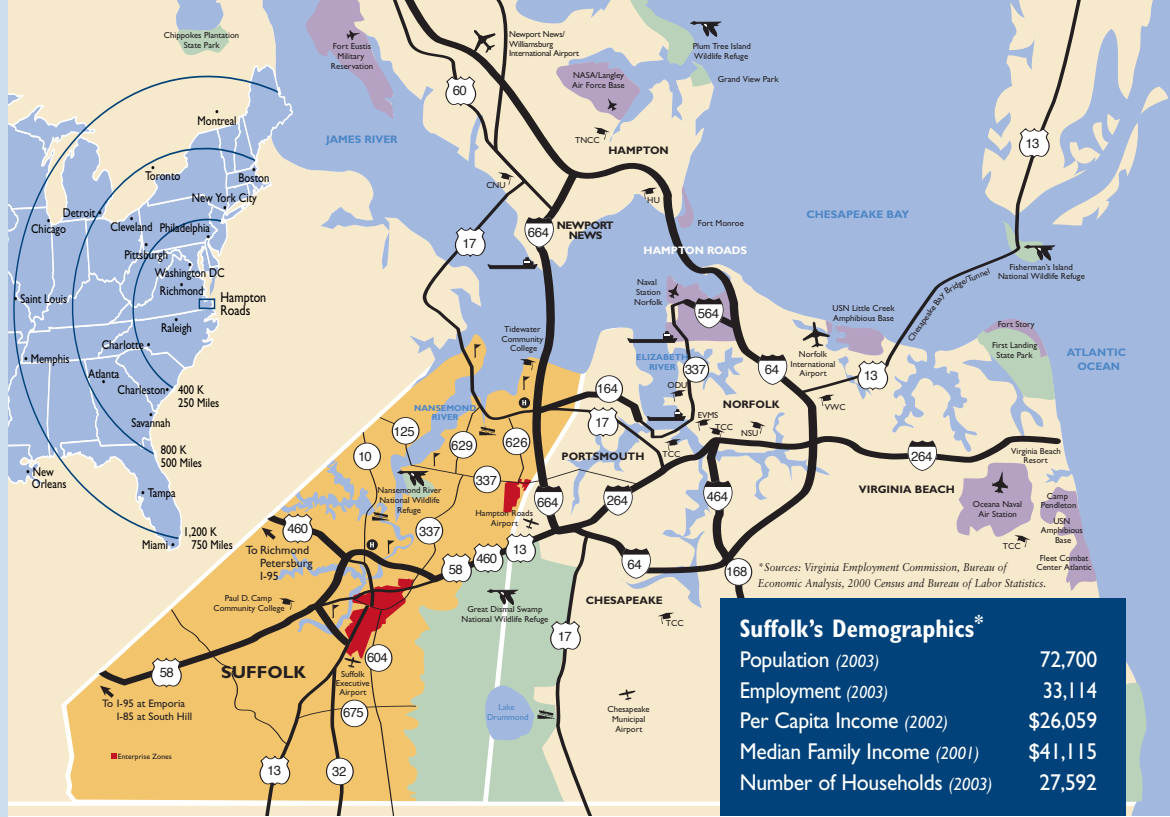


Prentiss House Visitor Center and Tourism Office.

Retrace Suffolk's legacy through our historic downtown beginning at the Suffolk Visitor Center at the Historic Prentiss House (c.1800).

Visit restored homes, historic churches and cemeteries, Civil War Trails and museums. Be sure to browse through some of the unique shops and boutiques in the revitalized downtown.

Suffolk honors heritage and community spirit with annual family-friendly festivals and traditions. Visit [www.Suffolk-Fun.com](http://www.Suffolk-Fun.com) for a complete list of events and dates. Or call 866-SEE-SUFK and request a *Good Time Guide*. Discover why it's a good time to be in Suffolk.



## Community Facilities

**RECREATION:** To relax, Suffolk residents are not short on options. Suffolk's waterways provide excellent boating and fishing. There are five outstanding golf courses, 24 tennis courts and numerous public parks and athletic fields. A \$13 million renovation will convert the old Suffolk High School into a cultural arts center.

**LODGING:** Suffolk has eight hotels and motels, and the Hilton Garden Inn and Suffolk Conference Center is expected to open Spring of 2005.

**LIBRARIES:** The Suffolk Public Library System is based at Morgan Memorial Library with three additional branches located in the city, and one bookmobile. Library holdings contain over 112,000 titles, periodicals and newspapers.

## Restaurants

Suffolk has experienced a culinary renaissance with the recent opening of four new dining establishments across the city. Panevino Café and the Harbour View Café opened in the Harbour View area of north Suffolk. Historic downtown Suffolk is the new home to regional favorites Kelly's Tavern and Baron's Pub. These new establishments complement a wide variety of eateries the City already has to offer. From national chains such as Ruby Tuesday and Applebee's, to down-home family diners, dining has never been better.

## Secondary Education

The Suffolk Public School system educates approximately 12,500 students from elementary grades through high school. There are 12 elementary, four middle and three high schools, including the new 1,800-student King's Fork High School, which opened

in the fall of 2004. Continuing the commitment to meet the demands of a growing population, a new elementary school and several major school renovations are part of the capital improvements plan supported by the Suffolk School Board.

Suffolk high schools partner with the Pruden Center for Industry and Technology to prepare students with vocational and technical training in a variety of fields. The center also offers adult continuing education and recreational classes. Suffolk Public Schools are devoted to instilling the value of lifelong learning, producing responsible citizens, and graduating quality workers.

## Colleges and Universities

Within Suffolk, Paul D. Camp Community College (PDCCC) and Tidewater Community College (TCC) offer occupational, technical and college transfer programs, and associate degrees in the arts and sciences. Through the Division of Workforce Development, PDCCC provides an array of business-related services designed to meet the training and educational needs of both existing and new employers in the region. There are 11 higher educational institutions nearby. The College of William and Mary, Hampton University, Old Dominion University, and Norfolk State University all offer undergraduate and advanced degrees in a variety of fields.

*It's a good time to be in Suffolk*

**Suffolk**  
VIRGINIA

Department of Economic Development  
Thomas A. O'Grady, Director  
127 East Washington Street, Suite 200  
Suffolk, Virginia 23434 USA  
757-923-3620 Fax: 757-923-3628  
econdev@city.suffolk.va.us  
[www.Suffolk.va.us](http://www.Suffolk.va.us)